

# Bitzer 6G-30.2Y-40P (x5) cool/freeze unit

## Specifications

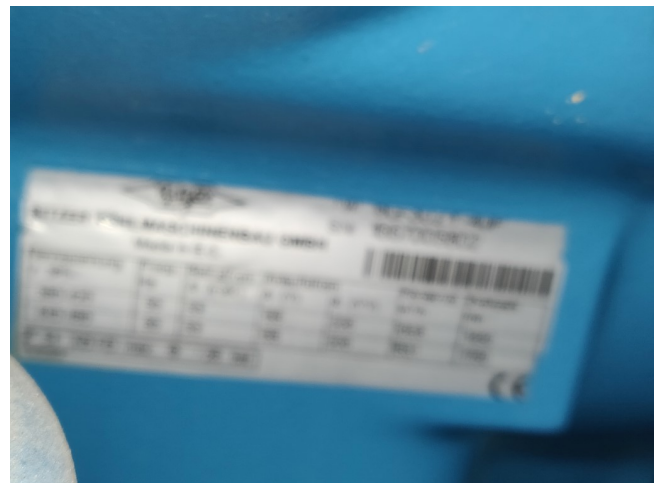
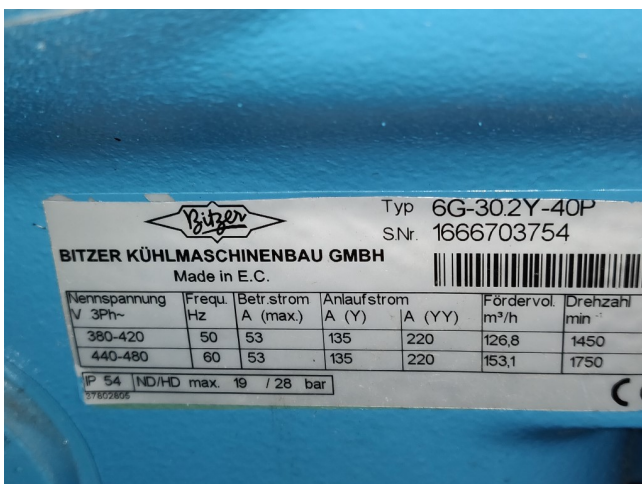
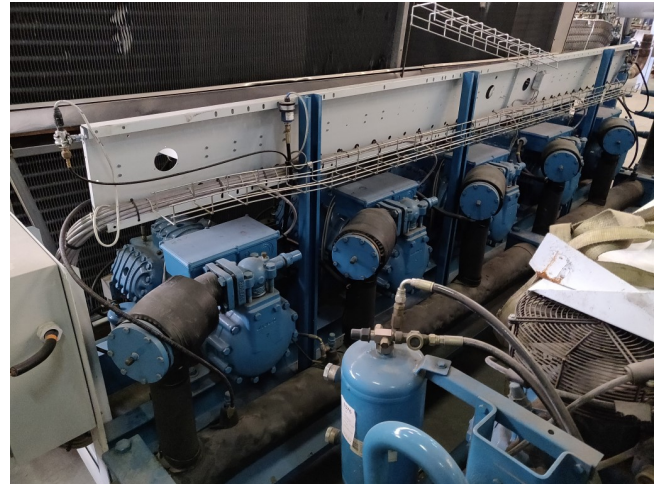
Brand	Bitzer
Type	6G-30.2Y-40P (x5) cool/freeze unit
Refrigerant	Freon
Refrigerant type	R 404 A or other types
kW at -5°C/+40°C	419.5
kW at -10°C/+40°C	346.5
kW at -20°C/+40°C	227.5
kW at -30°C/+40°C	139.5
kW at -40°C/+40°C	75.5
On steel base frame	✓
Pressure safety switches	✓
Hp/Lp/Op	
Liquid receiver	✓
Liquid receiver ltr.	25.1
Oil separator	✓
Package / Rack	✓
Stock	1



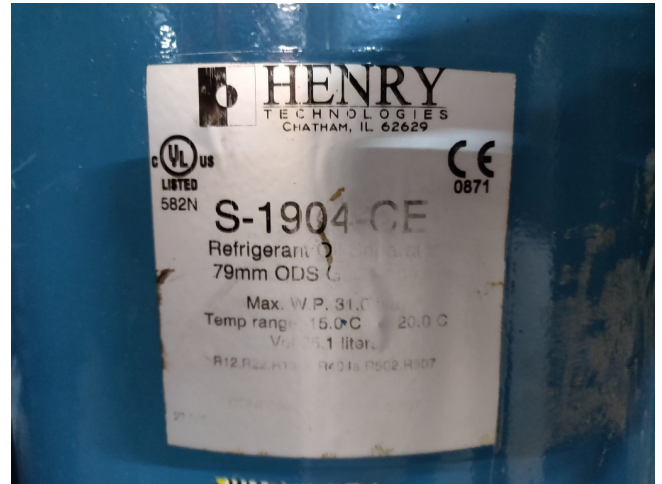
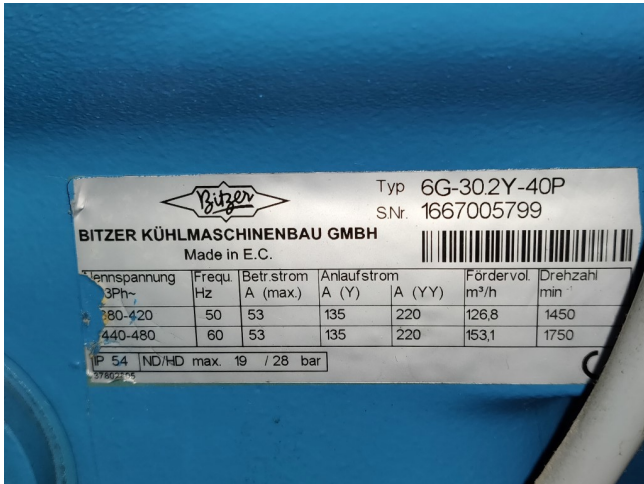
## Description

### Used Bitzer 6G-30.2Y-40P (x5) cool/freeze unit

Used but in very good condition cool/freeze unit with Bitzer 6G-30.2Y-40P (x5) Semi-hermetic Reciprocating piston Compressor. With all consisting components. Our capacity table is based on the used type of Freon. You can also use these compressors on alternative types of Freon. For all the other specs (if available), see the picture of the manufacturer model plate or the attached pdf file. \*Why choose for HOSBV? Were not only the largest used refrigeration specialist in Europe, but also, we deliver all equipment including an extensive test, warranty and industrial cleaning. \*Optional we can also perform a new paint job and arrange the logistics.







Compressor model		(6G-30.2Y)		Suction gas temperature		20.00 °C	
Mode		Refrigeration and Air conditioning		Operating mode		Auto	
Refrigerant		R404A		Power supply		400V-3-50Hz	
Reference temperature		Dew point temp.		Capacity control		100%	
Liq. subc. (in condenser)		0 K		Useful superheat		100%	
<b>Result</b>							
Q [W]	Cooling capacity	COP [-]		COPEER			
Q <sub>e</sub> [W]	Evaporator capacity	m [kg/h]		Mass flow			
P [kW]	Power input	Op.		Operating mode			
I [A]	Current	th [°C]		Discharge gas temp. w/o cooling			
Q <sub>c</sub> [W]	Condenser Capacity (w. HX)						

tc	to	-5°C	-10°C	-15°C	-20°C	-25°C	-30°C	-35°C	-40°C
30°C	Q [W]	98278	81168	66365	53605	42658	33320	25408	18755
	Q <sub>e</sub> [W]	98278	81168	66365	53605	42658	33320	25408	18755
	P [kW]	26.8	25.1	23.2	21.2	19.07	16.84	14.53	12.16
	I [A]	46.0	43.4	40.6	37.6	34.5	31.3	28.2	25.3
	Q <sub>c</sub> [W]	123698	104879	88408	73743	60774	49318	39213	30311
	COP [-]	3.67	3.24	2.86	2.53	2.34	1.98	1.75	1.54
	m [kg/h]	2469	2019	1637	1313	1039	807	613	451
	Op.	Standard	Standard	Standard	Standard	Standard	Standard	Standard	Standard
40°C	Q [W]	83997	69321	56575	45546	36047	27911	20984	15126
	Q <sub>e</sub> [W]	83997	69321	56575	45546	36047	27911	20984	15126
	P [kW]	30.8	28.5	26.0	23.4	20.7	17.89	15.06	12.20
	I [A]	52.3	48.6	44.8	40.8	36.8	32.9	28.9	25.4
	Q <sub>c</sub> [W]	113304	96385	81265	67753	55683	44907	35292	26719
	COP [-]	2.72	2.43	2.18	1.95	1.74	1.56	1.39	1.24
	m [kg/h]	2378	1941	1569	1253	985	759	568	408
	Op.	Standard	Standard	Standard	Standard	Standard	Standard	Standard	Standard
50°C	Q [W]	—	57604	46888	37580	29536	22623	16716	11702
	Q <sub>e</sub> [W]	—	57604	46888	37580	29536	22623	16716	11702
	P [kW]	—	31.4	28.3	25.2	21.9	18.66	15.36	12.06
	I [A]	—	53.1	48.4	43.6	38.7	33.9	29.3	25.2
	Q <sub>c</sub> [W]	—	87450	73808	61492	50378	40351	31310	23159
	COP [-]	—	1.83	1.65	1.49	1.35	1.21	1.09	0.97
	m [kg/h]	—	1865	1502	1193	930	708	520	363
	Op.	—	Standard	Standard	Standard	Standard	Standard	Standard	Standard